

# Victoria Responsible Gambling Foundation Gambling Harm – Taking Action For Change 2018

Geelong VIC 13-15 August 2018

## Gambling in New Zealand An Overview



**PROBLEM GAMBLING FOUNDATION  
OF NEW ZEALAND**

Healthy communities free from gambling harm



# Gambling in New Zealand

- **There are 4 types of gambling in NZ**
  - **TAB Racing and Sports Betting**
  - **NZ Lotteries**
  - **Pokies (outside Casinos)**
  - **Casino Gambling**
- **In 2016/2017 gamblers spent \$2.334m and increase of 5.6%**



**PROBLEM GAMBLING FOUNDATION  
OF NEW ZEALAND**

Healthy communities free from gambling harm



# Gambling in New Zealand

- In 2015 - 2% of adults were problem or moderate-risk gamblers, static for the last 15 years
- In any given year, just over 1% or 40,000 adults become problem or moderate-risk gamblers (NGS 2015)



**PROBLEM GAMBLING FOUNDATION  
OF NEW ZEALAND**

Healthy communities free from gambling harm



# Gambling in New Zealand

- **50% of gambling harm is from non-casino pokie machines**
- **\$883m was lost in 2017**
- **5x as many machines in the most deprived areas**
- **50% of pokie funds are generated by venues with the highest average deciles of deprivation**



**PROBLEM GAMBLING FOUNDATION  
OF NEW ZEALAND**

Healthy communities free from gambling harm



# Gambling in New Zealand

- **2.9% of adults use a pokie machine once in a month**
- **\$883m lost equates to \$9,523 per year each for approx. 93,000 people**
- **The median income in South Auckland is \$19,700 per year**

## Pokie Proceeds: Building Strong Communities

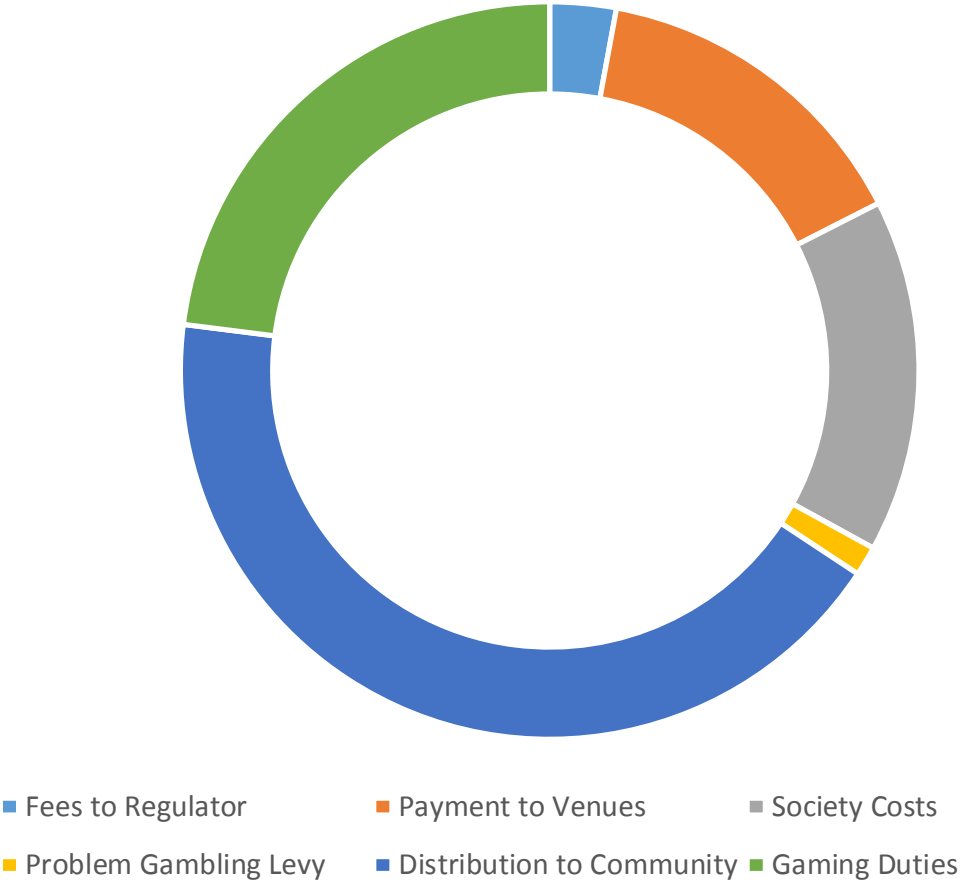


Healthy communities free from gambling harm

# Does the value proposition for community funding stack up?

Category	Percentage
Fees to Regulator	2.90%
Payment to Venues	14.60%
Society Costs	15.50%
Problem Gambling Levy	1.30%
Distribution to Community	42.70%
Gaming Duties	23.00%

Gaming Machine Society Cost Allocations



**Grants to Individual Regions**  
**58% (\$182.4m)**

**Funding applied by Clubs**  
**16% (\$50.8m)**

**Grants to National Recipients**  
**10% (\$31.0m)**

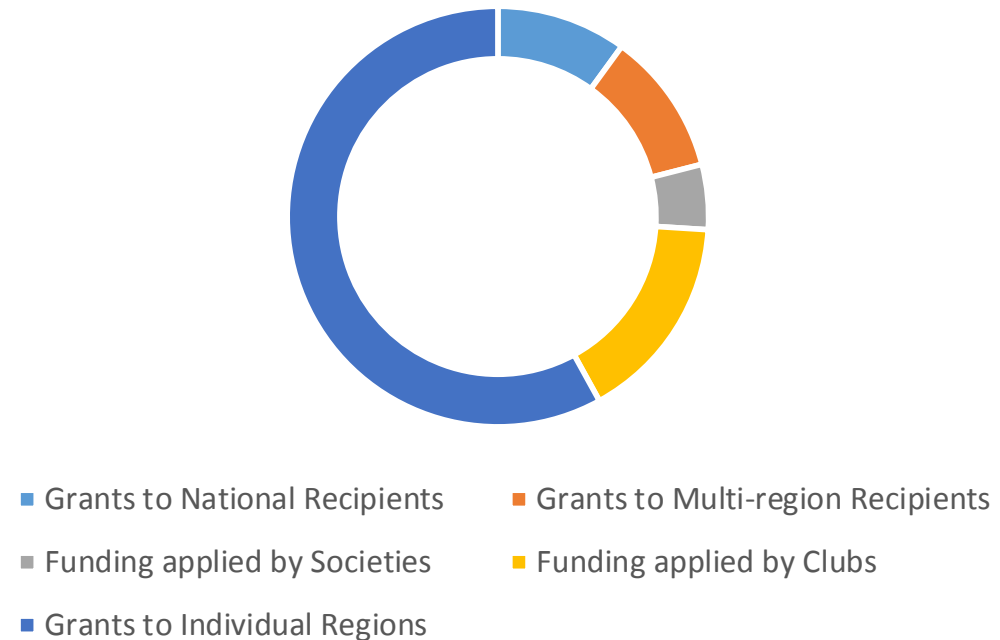
**Grants to Multi-Region Recipients**

**11% (\$35.0m)**

**Funding applied by Societies**

**5% (\$17.1m)**

**Gaming Machine Proceeds Distribution**



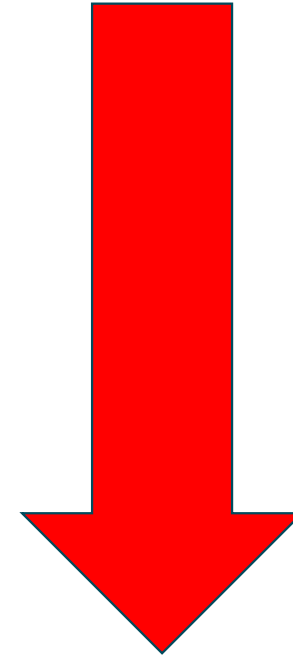
**PROBLEM GAMBLING FOUNDATION  
OF NEW ZEALAND**

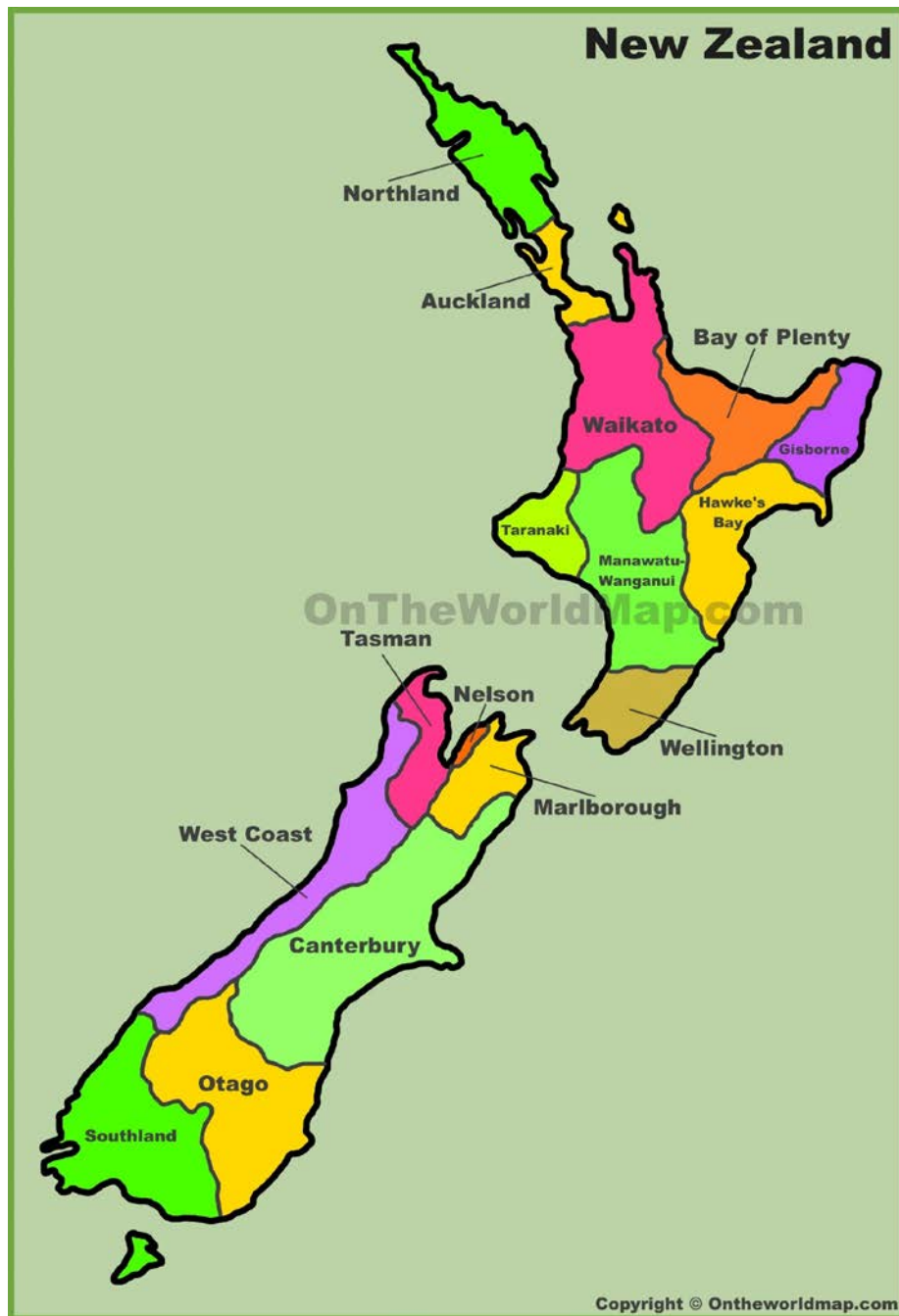
Healthy communities free from gambling harm





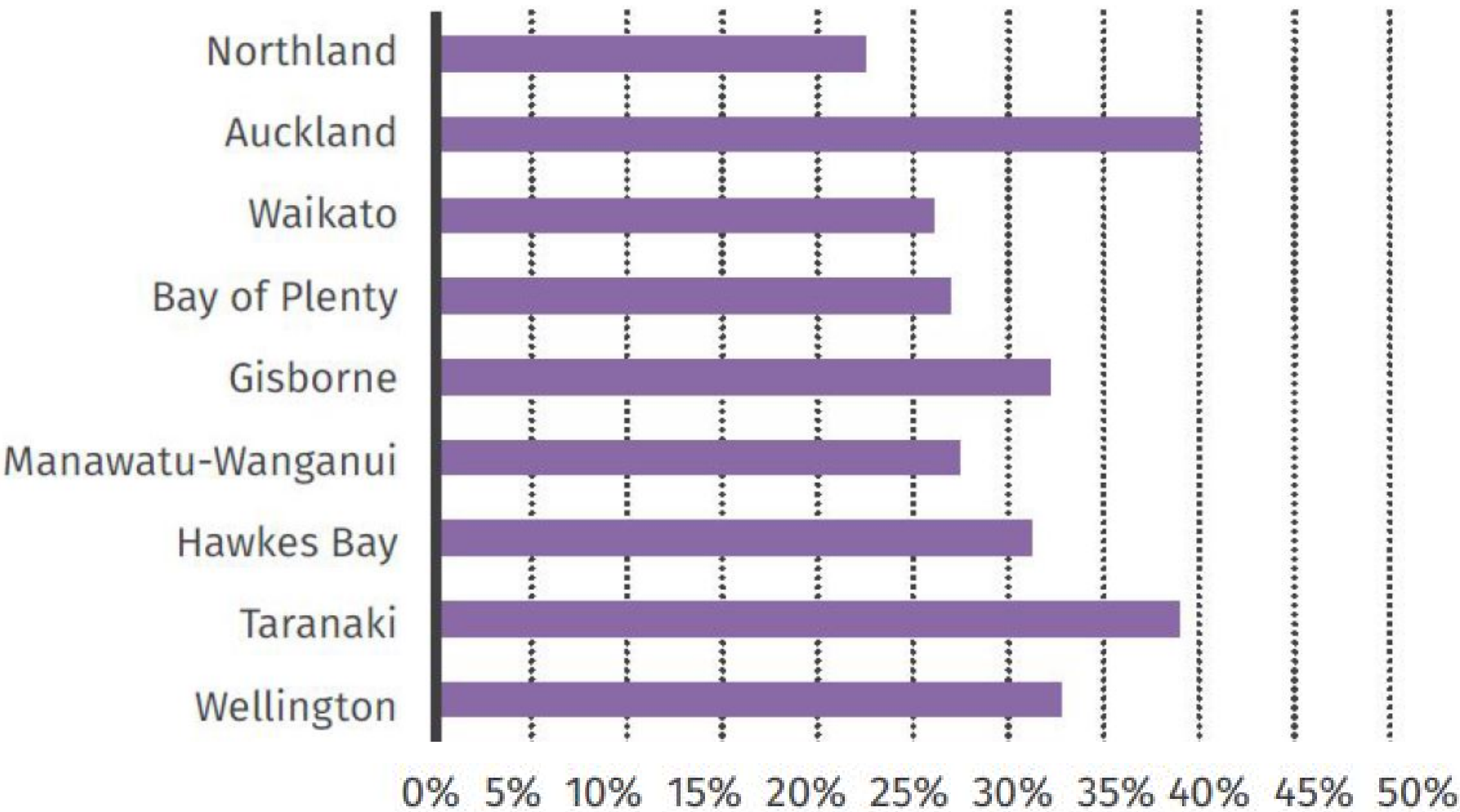
**So  
\$883 million  
becomes  
\$182 million**



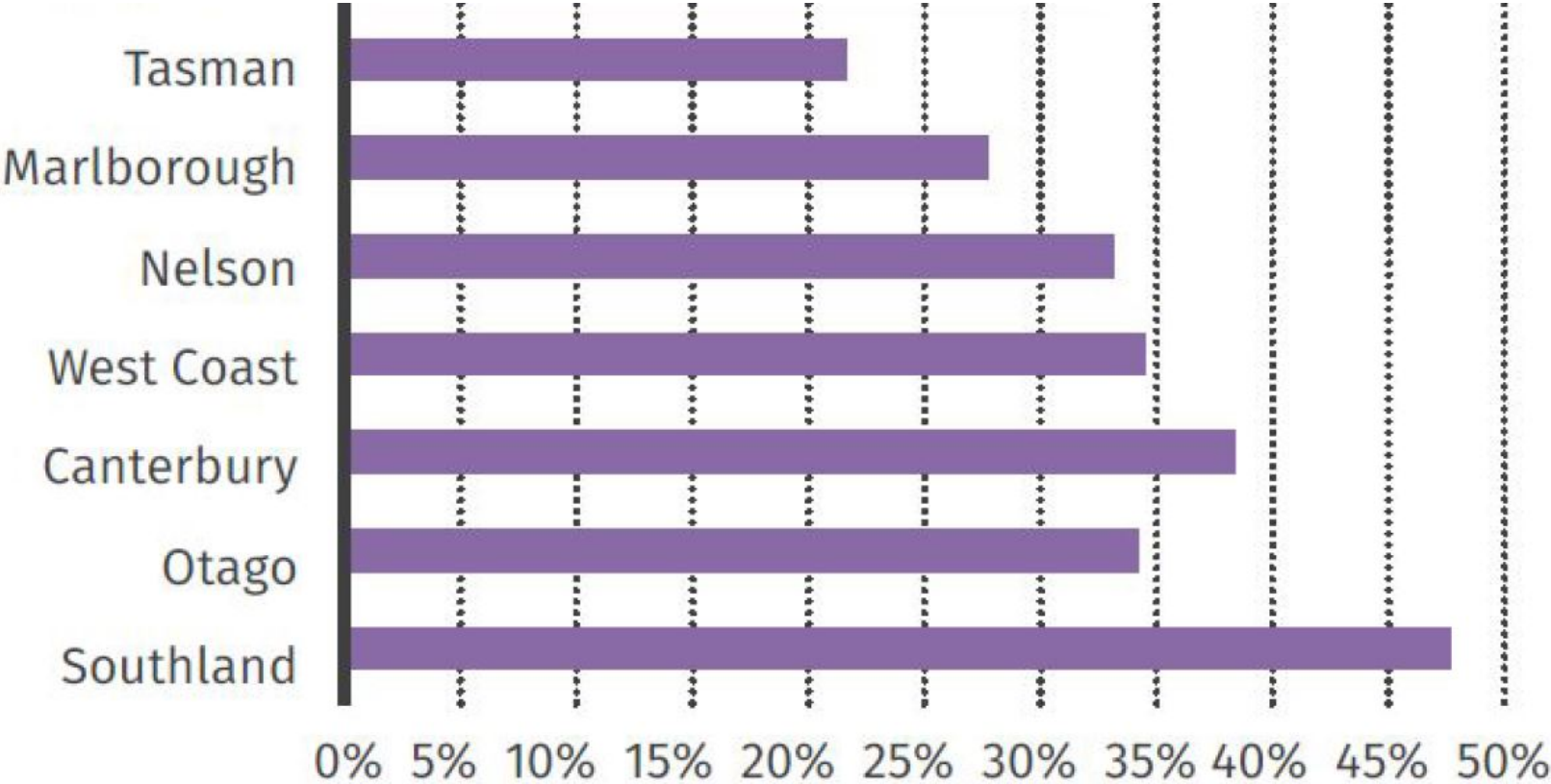


Region	Non-casino pokies per 1000
Northland	3.9
Auckland	2.4
Waikato	4.7
Bay of Plenty	4.2
Gisborne	4.1
Hawkes Bay	4.4
Taranaki	4.1
Manawatu-Wanganui	4.7
Wellington	3.7
Nelson	4.0
Marlborough	5.2
Tasman	3.3
West Coast	7.1
Canterbury	3.8
Otago	3.5
Southland	4.6

# Te Ika a Maui | North Island

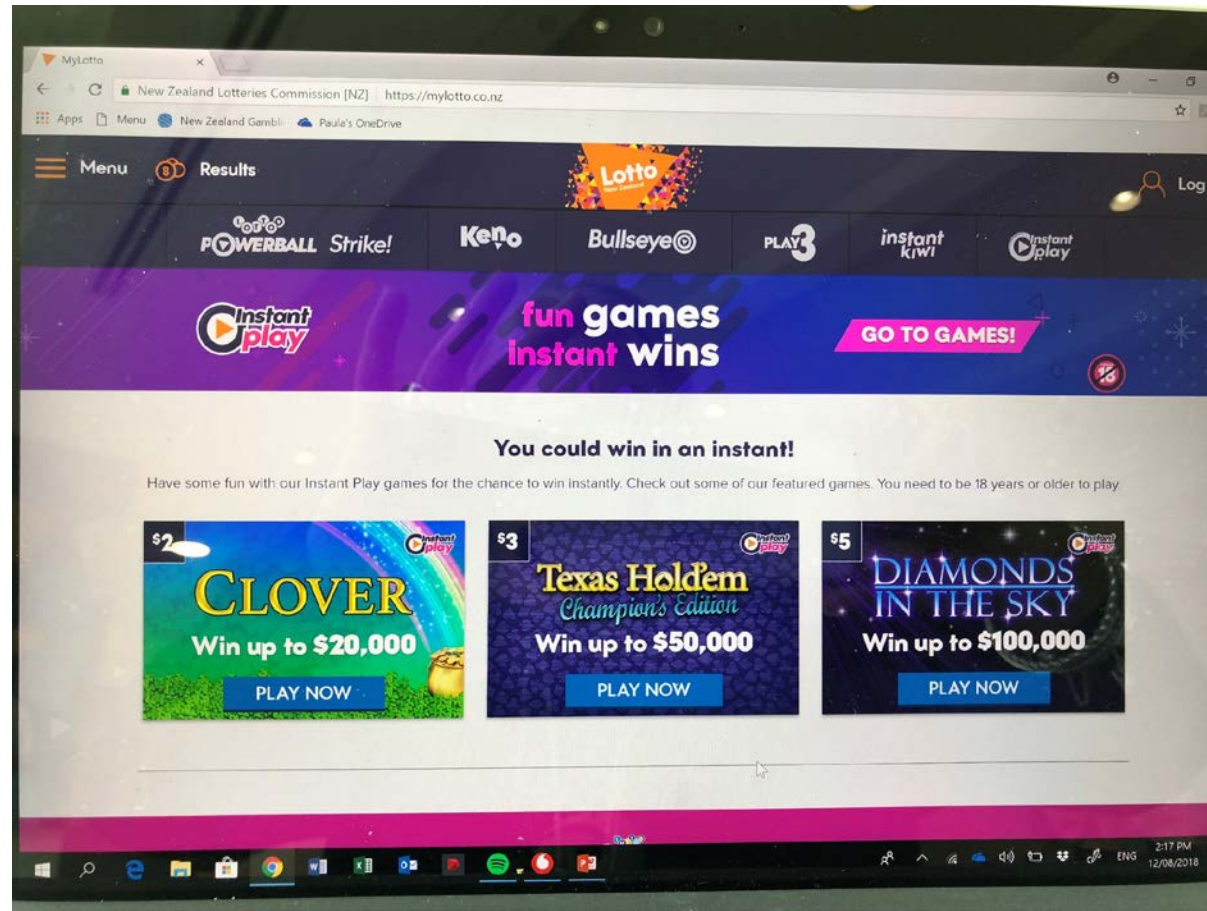


# Te Wai Pounamu | South Island



**And then there is Lotto and TAB Sports Betting**





<https://mylotto.co.nz/instant-play>



**PROBLEM GAMBLING FOUNDATION  
OF NEW ZEALAND**

Healthy communities free from gambling harm





# CASH BLAST

WIN UP TO \$20,000!

## LUCKY NUMBERS



## YOUR NUMBERS



REVEAL ALL



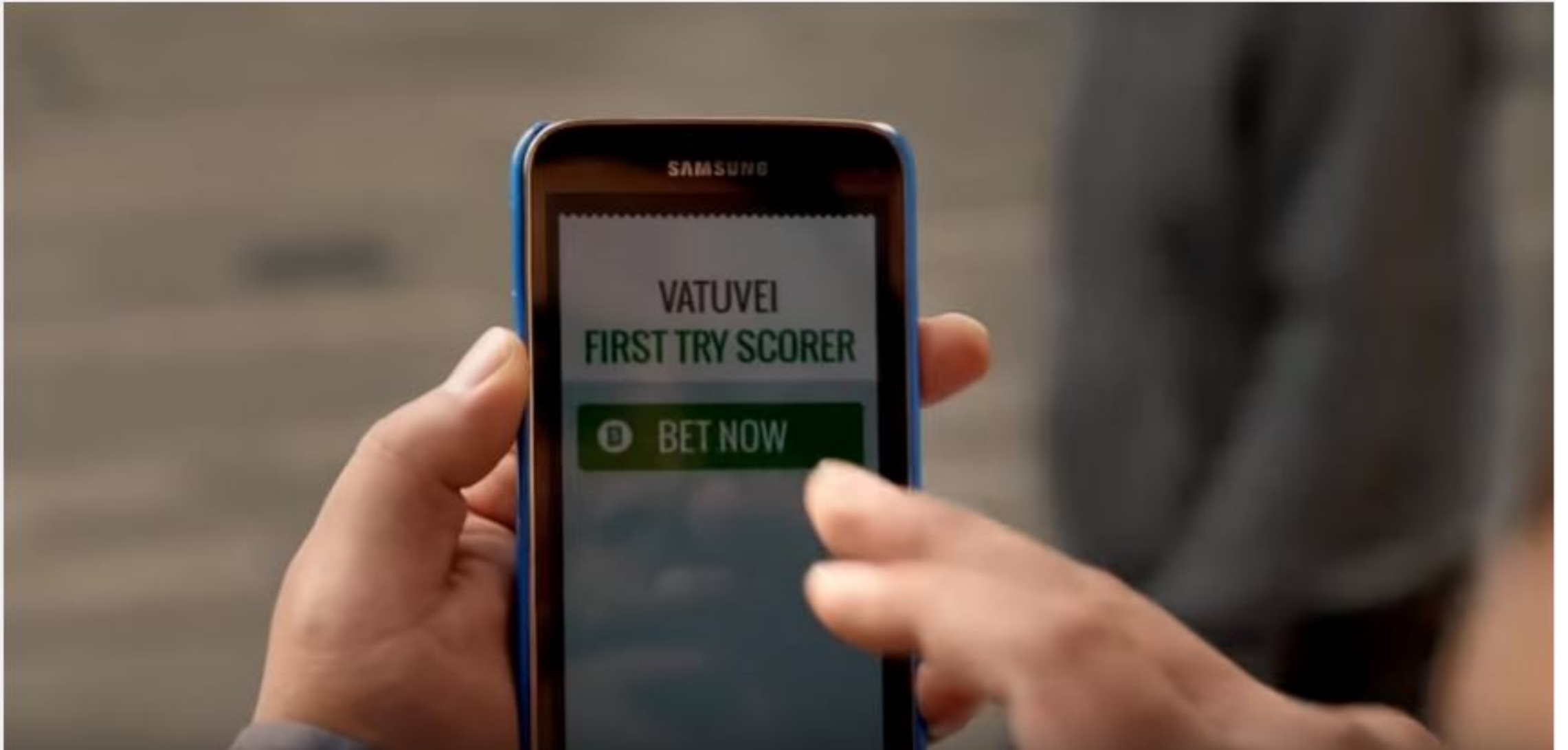
Ticket Cost: DEMO \$2 | Demo Wins: \$--

**“Hey, did you get our bet on?”**





**“Done!”**





**Off-shore  
gambling  
advertising on New  
Zealand prime  
television  
.net and .com**

# choice NOT CHANCE

Let's choose to end harmful gambling



Is your gambling still  
just for fun?

Take the quiz >



Is your  
gambling still  
just for fun?



Wondering  
about your  
gambling?



Get  
Help

Free 24 hour  
support. Call  
0800 654 655  
or Text 8006.



Concerned  
about someone  
else's  
gambling?



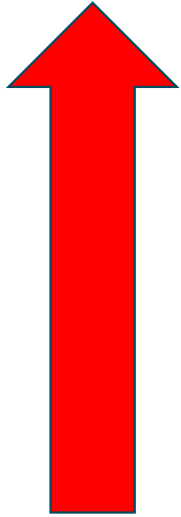
Know the signs  
of harmful  
gambling.



## The Choices in Mangere

- Instant Finance
- Discount Liquor
- Bar and Pokies
- Junk Food stores

# Gambling in New Zealand 2017



- **Non-Casino pokie machines spend is up 3.1%**
- **Lotteries spend is up 26.8%**
- **Racing and Sports Betting spend is up 1.3%**
- **Casino gambling spend is up 2.4%**

Te Tari Taiwhenua Department of Internal Affairs. (2017). *Class 4 gambling report*. Wellington: Retrieved from <https://www.dia.govt.nz/Resource-material-Information-We-Provide-Class-4-Gambling-Report>



**PROBLEM GAMBLING FOUNDATION  
OF NEW ZEALAND**

Healthy communities free from gambling harm




**Asian Family Services**  
Together enriching lives



**Mapu Māia**  
Providing Help. Enriching Lives.



A hand is visible on the left side of the image, holding a white rectangular card. The card has a thin black border and contains two lines of text in a black serif font. The background is a plain, light gray surface.

A system that robs Peter to pay Paul  
will always have Paul's support

# Gambling Act 2003

The purpose of this Act is to—

- (a) control the growth of gambling; and
- (b) prevent and minimise harm from gambling, including problem gambling; and
- (c) authorise some gambling and prohibit the rest; and
- (d) facilitate responsible gambling; and
- (e) ensure the integrity and fairness of games; and
- (f) limit opportunities for crime or dishonesty associated with gambling and the conduct of gambling; and
- (g) ensure that money from gambling benefits the community; and
- (h) facilitate community involvement in decisions about the provision of gambling.

# Change Priorities

- Pokie Machine density regulated
- Facial recognition technology
- Standardised policies on machine relocation across Territorial Local Authorities
- Transparency of Society Board membership and grants made
- Transparency about where machines are what losses leave the community
- Regulation to stop gambling advertising in mainstream media
- Regulate Lotto and TAB promotion in mainstream media
- Research impacts of recent introduction of Lotto “instant play” and impact on specific communities



**What we need most  
for change  
is  
political will  
and that is driven when people  
demand action**



**PROBLEM GAMBLING FOUNDATION  
OF NEW ZEALAND**

Healthy communities free from gambling harm



# He tangata he tangata he tangata



**PROBLEM GAMBLING FOUNDATION  
OF NEW ZEALAND**

Healthy communities free from gambling harm



# Waiata



**PROBLEM GAMBLING FOUNDATION  
OF NEW ZEALAND**

Healthy communities free from gambling harm



# He Hapori Ora

- Ka hanga tatou tahi
- He hapori ora
- I raro i te pai haumaruru e
- Ka tu matou mo to wairua
- Ka whai tatou i te pono e
- Ka tu matou mo to whanau
- Ka whai tatou i te tika e
- Ka whaia e tatou
- Te iti kahurangi
- I to tatou ake turanga e
- We will all create
- A healthy and safe community
- Safe (and free from harm)
- We will stand for your spirit
- We all of us will fight for the truth
- We will stand for your family
- We all of us will fight for justice
- We will all of us strive to achieve our
- Treasured aspirations
- And will stand fast